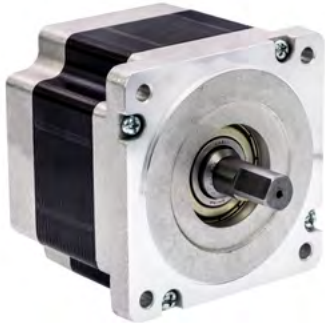


86BLH

无刷直流电机

BRUSHLESS DC MOTOR

详细说明 General Specifications



绕线接法	Winding Type	Star
霍尔角度	Hall effect angle	120° Electrical angle
绝缘等级	Insulation Class	B
环境温度	Ambient Temperature	-20°C~+50°C
绝缘电阻	Insulation Resistance	100MΩ Min.500 VDC
绝缘强度	Dielectric Strength	700VAC 1 minute

技术数据 Technical Specifications

电机型号 Model	极数 No. of Poles	相数 No. of Phase	额定电压 Rated Voltage (VDC)	额定转速 Rated Speed (RPM)	额定力矩 Rated Torque (N.M)	额定电流 Rated Current (Amps)	输出功率 Output Power (Watts)	峰值力矩 Peak Torque (N.M)	峰值电流 Peak Current (Amps)	力矩常数 Torque Constant (N.M/Amps)	反电势常数 Back EMF Constant (V/kRPM)	转动惯量 Rotor Inertia (g.cm ²)	机身高度 Motor Height L (mm)	重量 Motor Weight (kg)
86BLH01	8	3	24	3000	0.64	6.0	200	1.9	18	0.064	6.7	800	66.5	2.0
86BLH02			24	3000	1.0	11	314	3.0	33	0.064	6.7	1000	76.5	2.5
86BLH03			24	3000	1.4	17	440	4.2	51	0.064	6.7	1200	86.5	3.0
86BLH04			24	3000	1.8	24	565	5.4	72	0.064	6.7	1400	96.5	3.5
86BLH05			24	3000	2.5	40	785	7.5	120	0.064	6.7	1600	106.5	4.0

*以上仅为代表产品, 派生产品可按客户需求定制。
*Products can be customized by special request.

接线图 Wiring Diagram

+5V	RED	红	UL3266 26 AWG
HALL A	YEL	黄	
HALL B	GRN	绿	
HALL C	BLU	蓝	
GND	BLK	黑	UL3266 14AWG
PHASE A	YEL	黄	
PHASE B	GRN	绿	
PHASE C	BLU	蓝	

外型图 Mechanical Dimension

